



तमिलनाडु के लिए राज्य स्तरीय समग्र कृषि-मौसम परामर्श  
बुलेटिन



**State Composite Agro-meteorological Advisory  
Bulletin for Tamil Nadu and Puducherry  
Bulletin No. 051/2024**

For the period 0830 IST, 25<sup>th</sup> June 2024 to

0830 IST, 30<sup>th</sup> June 2024

**Issued on Tuesday, 25<sup>th</sup> June 2024**

Issued by

DDGM, Regional Meteorological Centre, India Meteorological Department,  
Chennai in collaboration with TNAU and nine AMFU's of Agro climatic Zones of  
the Tamil Nadu state

## Agro climatic zones of the state

Sl. No	Agro climatic zone	Districts	Agro met field Unit (AMFU) location
1	Northeastern zone	Kanchipuram, Tiruvallur, Cuddalore Tiruvannamalai, Chennai, Villupuram , Vellore	Chennai
2	Northwestern zone	Dharmapuri, Krishnagiri, Salem and Namakkal	Namakkal
3	Western Zone	Erode, Tiruppur and Coimbatore,	Coimbatore,
4	Cauvery Delta zone	Thanjavur, Nagapattinam, Tiruvarur, Karur, Perambalur, Ariyalur and Tiruchirapalli.	Adudurai
5	Southern zone	Virudhunagar, Tirunelveli and Thoothukudi	Kovilpatti
6	South Zone	Pudukkottai, Madurai, Dindigul, Theni, Ramanathapuram and Sivagangai	Kannivadi
7	High rainfall zone	Kanyakumari	Pechiparai
8	Hilly zone	Nilgiris	Ooty
9	Coastal Zone	Karaikal and Pondicherry	Karaikal



## Past Weather Summary for the period 21.06.24 to 24.06.24 for the State of Tamilnadu & Puducherry

### Temperature:

Maximum Temperature of range **29°C – 39°C** prevailed over the state. Kodaikanal and Uthagamandalam recorded Maximum temperature range **18°C – 22°C** during the period.

Minimum temperature of range **23°C - 30°C** prevailed over the State. Kodaikanal and Uthagamandalam recorded Minimum temperature of range **11°C - 14°C** during the same period.

### Spatial distribution of Rainfall

Spatial distribution of Rainfall	Tamil Nadu	Puducherry
Widespread (Most places)	--	--
Fairly widespread (Many places)	--	--
Scattered (Few Places)	<b>21.06.24 &amp; 24.06.24</b>	<b>23.06.24 &amp; 24.06.24</b>
Isolated (One or Two Places)	<b>22.06.24 &amp; 23.06.24</b>	--
Dry	--	<b>21.06.24 &amp; 22.06.24</b>

### Chief Amounts of Rainfall (in cms):-

**21.06.24** : Sankaridurg (dist Salem), Yercaud (dist Salem) 4 each, Chinnakalar (dist Coimbatore), Zone 05 GCC (dist Chennai), Rasipuram (dist Namakkal), Zone 09 Ice House (dist Chennai), Zone 06 T.V.K Nagar (dist Chennai), Kalial (dist Kanniyakumari), Zone 10 Kodambakkam (dist Chennai), Colachel (dist Kanniyakumari), Zone 09 Teynampet (dist Chennai), Zone 05 Royapuram (dist Chennai), DGP Office (dist Chennai), Vepur (dist Cuddalore), Sholayar (dist Coimbatore) 3 each, Perambur (dist Chennai), Valparai PAP (dist Coimbatore), Ambathur (dist Chennai), Mangalapuram (dist Namakkal), Zone 08 Malar Colony (dist Chennai), Chennai (N) (dist Chennai), Valparai Taluk Office (dist Coimbatore), Kurunthancode (dist Kanniyakumari), Chennai(N) AWS (dist Chennai), Keelpennathur (dist Tiruvannamalai), Zone 11 Valasaravakkam (dist Chennai), Upper Bhavani (dist The Nilgiris), Nalumukku (dist Tirunelveli), Poonamalle ARG (dist Tiruvallur), Gobichettipalayam (dist Erode), Sholingur (dist Ranipet), Natrampalli (dist Tirupathur), Nagercoil (dist Kanniyakumari), KRP Dam (dist Krishnagiri), Kavundapadi (dist Erode), Cincona (dist Coimbatore), Ulundurpet (dist Kallakurichi), Ayanavaram Taluk Office (dist Chennai), R.K.Pet (dist Tiruvallur), Zone 11 U32 Maduravoyal (dist Chennai), Pelandurai (dist Cuddalore) 2 each, Elanthakuttai Medu (dist Erode), Bhavani (dist Erode), Thalavasal (dist Salem), Kuzhithurai (dist Kanniyakumari), Kozhiporvilai (dist Kanniyakumari), Wallajah (dist Ranipet), Valparai PTO (dist Coimbatore), Varattupallam (dist Erode), Anna University (dist Chennai), Zone 08 Anna Nagar (dist Chennai), Zone2 D156 Mugalivakkam (dist Chennai), Periyar (dist Theni), Anaikedanku (dist Kanniyakumari), Zone4 Perungudi (dist Chennai), Koratur (dist Tiruvallur), NIOT\_Pallikaranai ARG (dist

Chennai), Madukkur (dist Thanjavur), Kundrathur (dist Kancheepuram), Zone 07 Ambattur (dist Chennai), Chembarambakkam ARG (dist Kancheepuram), ACS Medical College ARG (dist Kancheepuram), Omalur (dist Salem), Mimisal (dist Pudukkottai), Mambzhathuraiyaru (dist Kanniyakumari), Perunchani Dam (dist Kanniyakumari), Tiruttani PTO (dist Tiruvallur), Suralacode (dist Kanniyakumari), Pallipattu (dist Tiruvallur), Kakkachi (dist Tirunelveli), Poonamallee (dist Tiruvallur), Devala (dist The Nilgiris), Manalmedu (dist Mayiladuthurai), Panapakkam (dist Ranipet), Attur (dist Salem), Puthan Dam (dist Kanniyakumari), Mullanginavillai (dist Kanniyakumari), Zone2 Alandhur (dist Chennai), Zone 02 D15 Manali (dist Chennai), Sandhiyur KVK AWS (dist Salem), Gingee (dist Villupuram), Zone 07 U18 D81 Vanagaram (dist Chennai), Vaniyambadi (dist Tirupathur), Ammoor (Walajah Railway) (dist Ranipet), Jamunamarathur (dist Tiruvannamalai), Anna University ARG (dist Chennai), Balamore (dist Kanniyakumari), Arcot (dist Ranipet), Kodivery (dist Erode), SCS Mill Arasoor (dist Villupuram), Oothu (dist Tirunelveli), Perundurai (dist Erode), Kumarapalayam (dist Namakkal), Adayamadai (dist Kanniyakumari), Upasi TRF AWS (dist Coimbatore), Virudhachalam ARG (dist Cuddalore), Kallakurichi AWS (dist Kallakurichi), Kalavai AWS (dist Ranipet) 1 each.

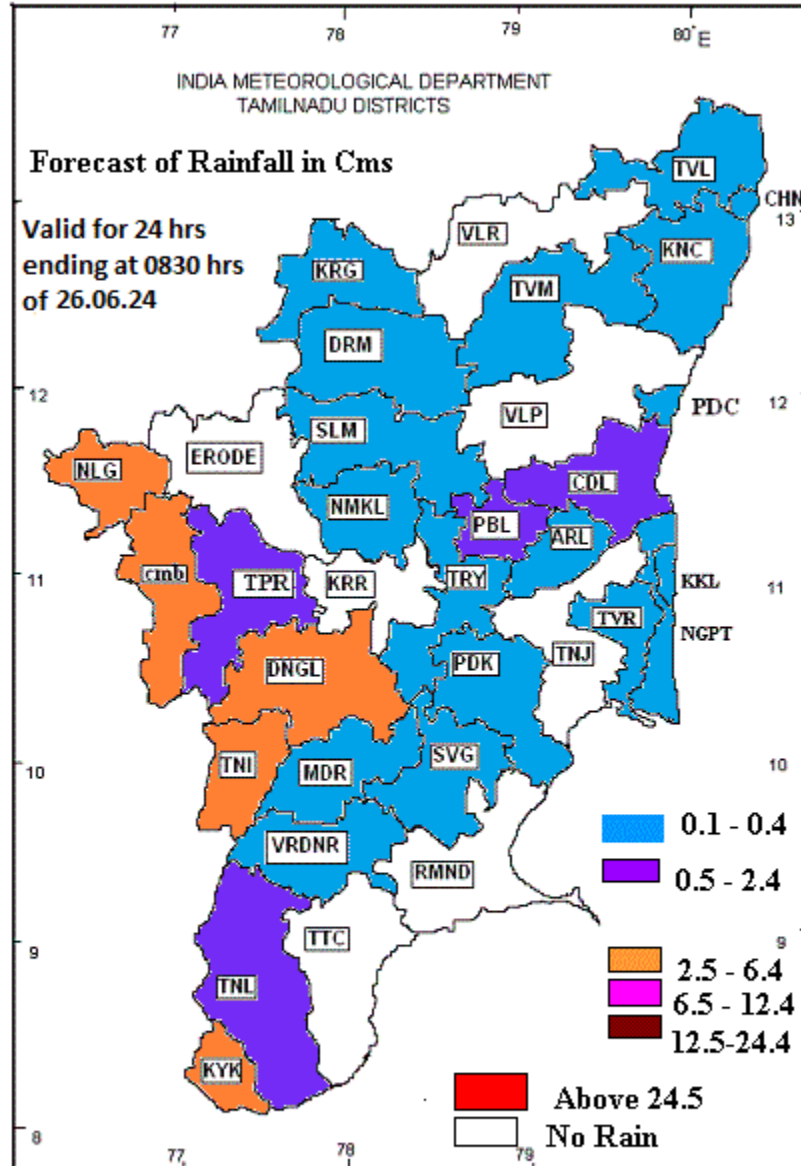
**22.06.24** : Puzhal ARG (dist Tiruvallur) 5,Chinnakalar (dist Coimbatore), West Tambaram\_Sit ARG (dist Chengalpattu), Valparai PAP(dist Coimbatore), Yercaud (dist Salem), Kalial (dist Kanniyakumari) 3 each,Valparai Taluk Office (dist Coimbatore), Valparai PTO (dist Coimbatore), Tambaram (distChengalpattu), RSCL Vallam (dist Villupuram), Vellore (dist Vellore), Satyabama Uty ARG (distKancheepuram), Cincona (dist Coimbatore), Sholayar (dist Coimbatore), Periyar (dist Theni),Ponnai Dam (dist Vellore), Upasi TRF AWS (dist Coimbatore), Sriperumbudur (distKancheepuram), ZONE 15 Uthandi (dist Chennai) 2 each,Arakonam (dist Ranipet), Upper Bhavani (dist The Nilgiris), Mettur (dist Salem), Wallajah (distRanipet), Kalasapakkam (dist Tiruvannamalai), Thirukalukundram (dist Chengalpattu),Meenambakkam AWS (dist Chennai), Alandur (dist Chennai), PWD Makkinampatti (distCoimbatore), Chennai (AP) (dist Chennai), Ennore AWS (dist Chennai), Jamunamarathur (distTiruvannamalai), Balamore (dist Kanniyakumari), Virinjipuram AWS (dist Vellore), Katpadi(dist Vellore), Adayamadai (dist Kanniyakumari), Sholinganallur (dist Chennai), Suralacode(dist Kanniyakumari), Avalanche (dist The Nilgiris), Virdhachalam KVK AWS (dist Cuddalore),Colachel (dist Kanniyakumari), Eraniel (dist Kanniyakumari), Tindivanam (dist Villupuram),Sandhiyur KVK AWS (dist Salem), Alangayam (dist Tirupathur), Thekkadi (dist Theni),Perunchani Dam (dist Kanniyakumari), Ranipet\_AWS (dist Ranipet), Yercaud\_ISRO AWS(dist Salem), Tiruvannamalai\_ISRO AWS (dist Tiruvannamalai), Mammallapuram PWDbungalow (dist chengalpattu), Keelampakkam (dist Chengalpattu), Alandur (dist Chennai),Sholinganallur (dist chennai) 1 each

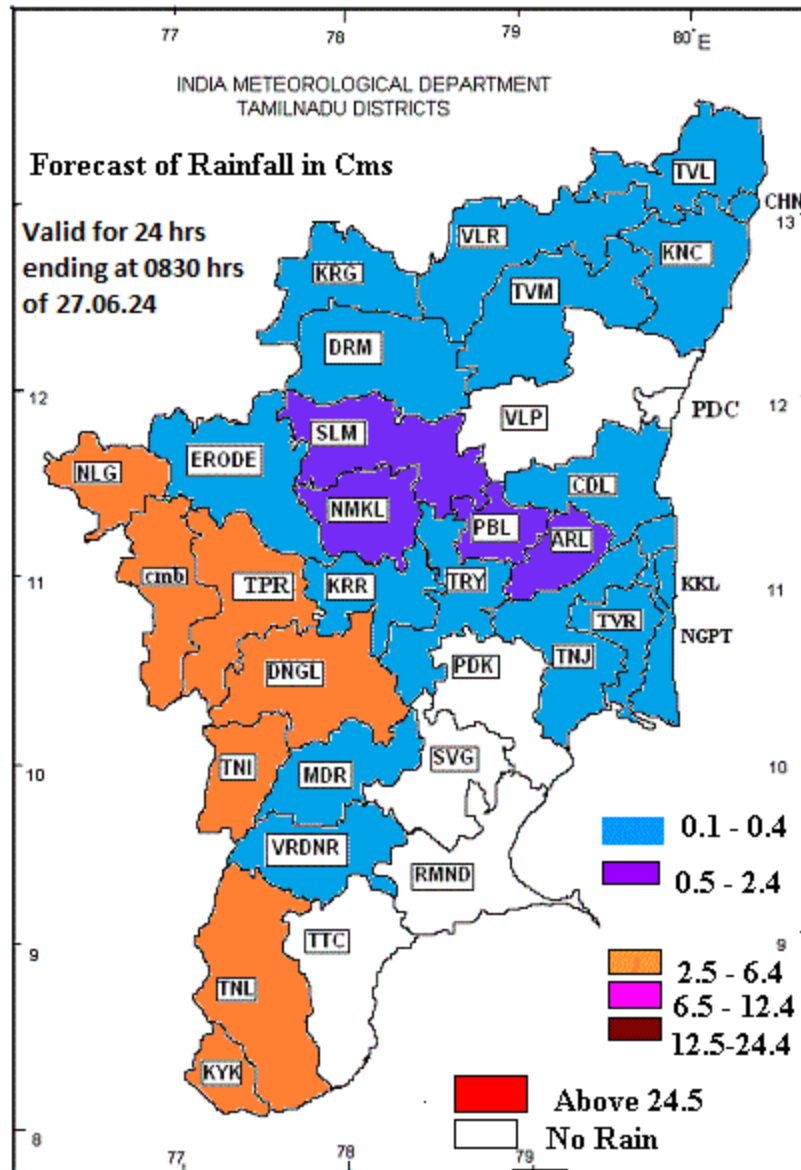
**23.06.24** : SRC Kudithangi (dist Cuddalore), Chinnakalar (dist Coimbatore) 7 each, Devala (dist The Nilgiris), Taluk Office Pandalur (dist The Nilgiris) 6 each, Tiruvadana (dist Ramanathapuram), Gudalur Bazar (dist The Nilgiris), Upper Gudalur (dist The Nilgiris) 5 each, Arimalam (dist Pudukkottai), K.M.Koil (dist Cuddalore), Tondi (dist Ramanathapuram), Cuddalore Collector Office (dist Cuddalore), Pathukannau (dist Puducherry), BASL Mugaiyur (dist Villupuram), Puducherry (dist Puducherry) 4 each, Valparai PTO (dist Coimbatore), Cuddalore (dist Cuddalore), Valparai PAP (dist Coimbatore), Chetpet (dist Tiruvannamalai), Cincona (dist Coimbatore), Valparai Taluk Office (dist Coimbatore), Alangudi (dist Pudukkottai), RSCL-2 Koliyanur (dist Villupuram), Ketti (dist The Nilgiris), Gingee (dist Villupuram), Vilupuram (dist Villupuram), Upasi TRF AWS (dist Coimbatore) 3 each, Periyar (dist Theni), Illayangudi (dist Sivagangai), Naduvattam (dist The Nilgiris), Harisan Malayalam Ltd. (dist The Nilgiris), Me Mathur (dist Cuddalore), Vanamadevi (dist Cuddalore), Sholayar (dist Coimbatore), Kilanilai (dist Pudukkottai), Uthagamandalam (dist The Nilgiris), RSCL-2 Valavanur (dist Villupuram), Puducherry Town (dist

Puducherry), Bahour (dist Puducherry), Tirukannur (dist Puducherry), Vandavasi (dist Tiruvannamalai), Mettur (dist Salem), Panruti (dist Cuddalore), Upper Bhavani (dist The Nilgiris), RSCL-2 Nemoor (dist Villupuram), Vattanam (dist Ramanathapuram), RSCL-2 Mundiampakkam (dist Villupuram), Annur (dist Coimbatore), Virdhachalam KVK AWS (dist Cuddalore), Coonoor PTO (dist The Nilgiris), Kallaty (dist The Nilgiris), RSCL-3 Anandhapuram (dist Villupuram), Vepur (dist Cuddalore), Kuppanatham (dist Cuddalore) 2 each, Theerthandathanam (dist Ramanathapuram), RSCL-2 Kedar (dist Villupuram), Jambukuttapatti (dist Krishnagiri), Pochampalli ARG (dist Krishnagiri), Karaikudi (dist Sivagangai), Gobichettipalayam (dist Erode), Kodanad (dist The Nilgiris), RSCL-2 Kanjanur (dist Villupuram), RSCL Vallam (dist Villupuram), Barur (dist Krishnagiri), Virudachalam (dist Cuddalore), Adavinainnarkoil Dam (dist Tenkasi), Thandarampettai (dist Tiruvannamalai), Peravurani (dist Thanjavur), Uthangarai (dist Krishnagiri), Nalumukku (dist Tirunelveli), RSCL-2 Soorapattu (dist Villupuram), Thekkadi (dist Theni), Thammampatty (dist Salem), RSCL-3 Valathy (dist Villupuram), Vanur (dist Villupuram), Avalanche (dist The Nilgiris) 1 each.

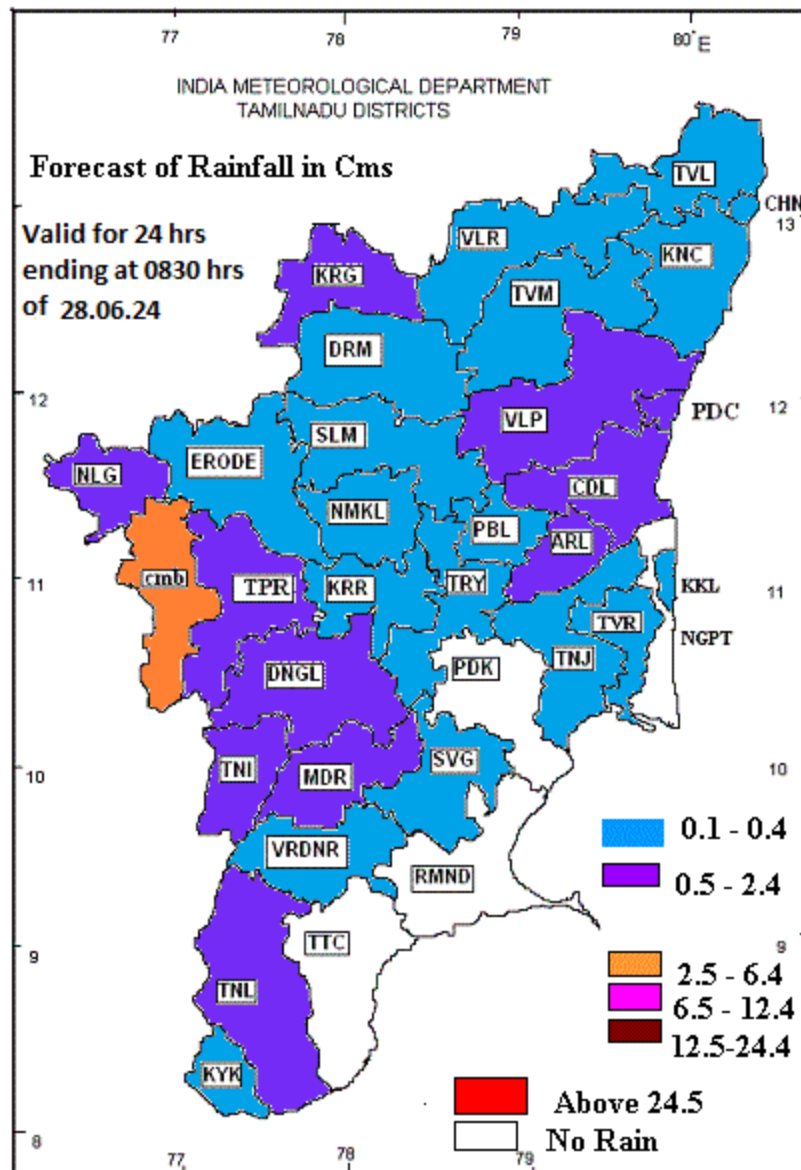
**24.06.24 :** Taluk Office Pandalur (dist The Nilgiris) 9, Wood Braiyar Estate (dist The Nilgiris), Went Worth Estate (dist The Nilgiris) 8 each, Harisan Malayalam Ltd. Cherumulli (dist The Nilgiris), Chinnakalar (dist Coimbatore) 7 each, Devala (dist The Nilgiris) 6, Avalanche (dist The Nilgiris), Valparai PAP (dist Coimbatore), Cincona (dist Coimbatore), Valparai Taluk Office (dist Coimbatore), Tindivanam (dist Villupuram) 5 each, Valparai PTO (dist Coimbatore), RSCL-2 Nemoor (dist Villupuram), Upasi TRF AWS (dist Coimbatore) 4 each, Sholayar (dist Coimbatore), Upper Bhavani (dist The Nilgiris), Oothu (dist Tirunelveli), Periyar (dist Theni), Thekkadi (dist Theni), Siruvani Adivaram (dist Coimbatore), Colachel (dist Kanniyakumari) 3 each, Nalumukku (dist Tirunelveli), Mullanginavillai (dist Kanniyakumari), Kodavasal (dist Thiruvarur), Nagercoil ARG (dist Kanniyakumari), Kil Kotagiri Estate (dist The Nilgiris), Kakkachi (dist Tirunelveli), Palacode (dist Dharmapuri), Needamangalam (dist Thiruvarur), Nagercoil (dist Kanniyakumari), Gudalur Bazar (dist The Nilgiris), Vanur (dist Villupuram), Tiruvarur (dist Thiruvarur), Maduranthagam (dist Chengalpattu), Tiruvarur AWS (dist Thiruvarur), Kozhiporvilai (dist Kanniyakumari), Barwood (dist The Nilgiris), Upper Gudalur (dist The Nilgiris), Palacode ARG (dist Krishnagiri) 2 each, Krishnagiri (dist Krishnagiri), Ambur (dist Tirupathur), Denkanikottai (dist Krishnagiri), Naduvattam (dist The Nilgiris), Nedungal (dist Krishnagiri), Marandahalli (dist Dharmapuri), Thuckalay (dist Kanniyakumari), Adayamadai (dist Kanniyakumari), Mylaudy (dist Kanniyakumari), Kothagiri (dist The Nilgiris), Mambzhathuraiyaru (dist Kanniyakumari), Anaikedanku (dist Kanniyakumari), Pandavaiyar Head (dist Thiruvarur), Nannilam (dist Thiruvarur), Marakkanam (dist Villupuram), Manjolai (dist Tirunelveli), Nagapattinam (dist Nagapattinam), Pechiparai (dist Kanniyakumari), Sembanarkoil PWD (dist Mayiladuthurai), Mayiladuthurai (dist Mayiladuthurai), RSCL-3 Anandhapuram (dist Villupuram), Yercaud (dist Salem), KRP Dam (dist Krishnagiri), Balamore (dist Kanniyakumari), Pechiparai AWS (dist Kanniyakumari), Valangaiman (dist Thiruvarur), Yercaud ISRO AWS (dist Salem), Thirupathisaram AWS (dist Kanniyakumari), Kunderipallam (dist Erode), Ramanadhi Dam Section (dist Tenkasi), Emeralad (dist The Nilgiris), Ayyampettai (dist Thanjavur) 1 each.

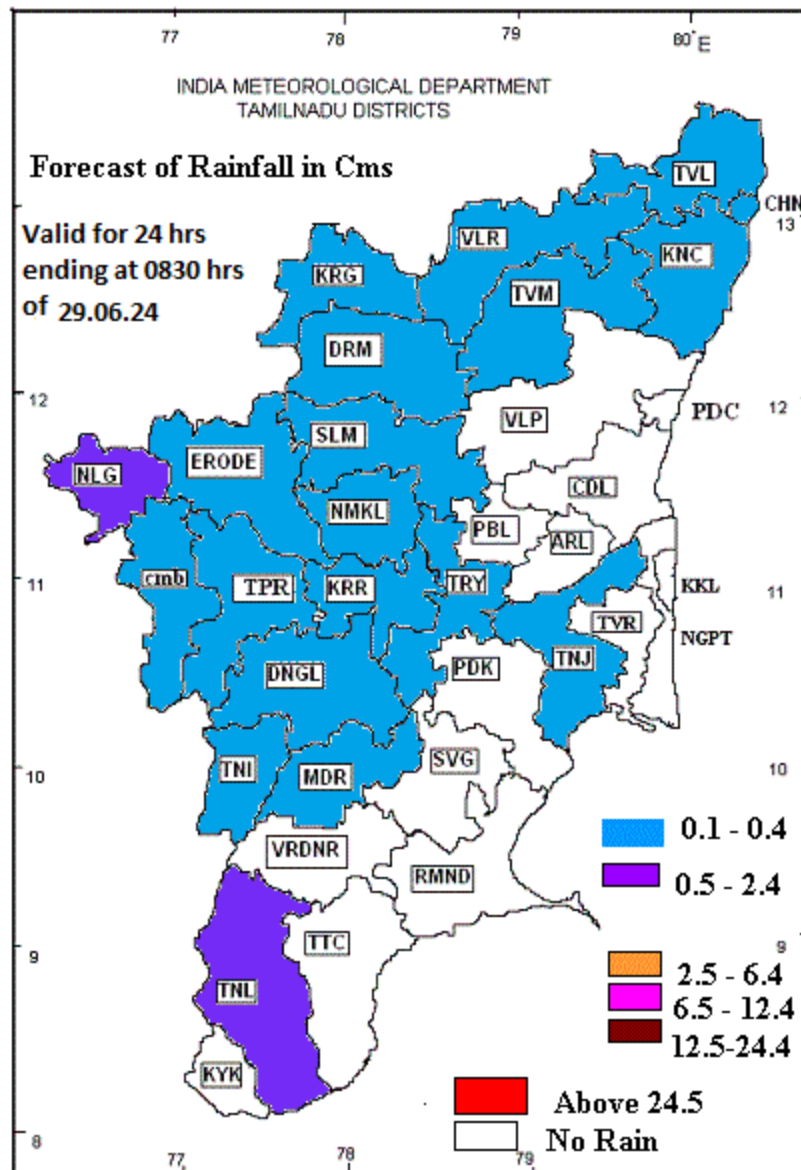
**DISTRICT LEVEL ENSEMBLE WEATHER FORECAST ISSUED ON: 25.06.24  
VALID FOR THE NEXT 5 DAYS**

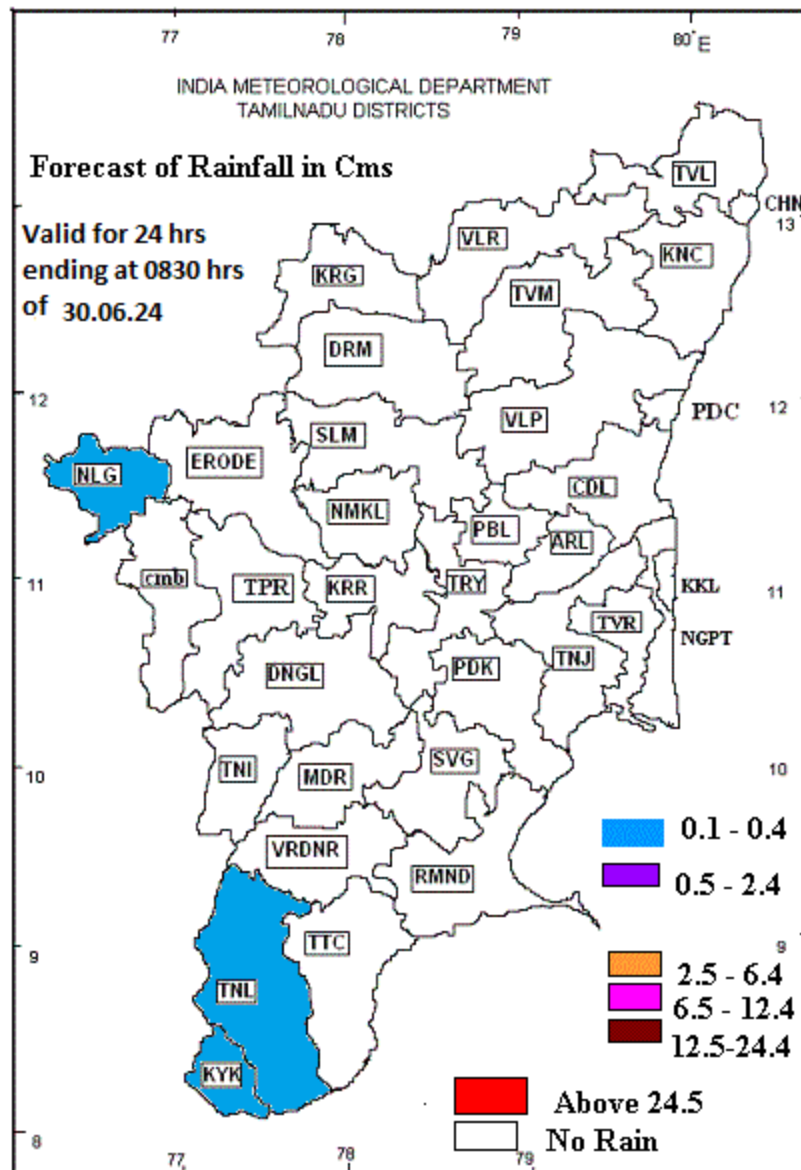












## District-wise Agromet Advisories

### **Chennai, Kancheepuram, Villupuram, Tiruvannamalai, Tiruvallur, Vellore and Cuddalore**

#### SMS Advisory:

(26.06.2024-30.06.2024) Light to moderate rain is likely to occur at one or two places over Tamilnadu.

#### Livestock Advisory:

Accidental grazing of new shoots of sorghum fodder may lead to HCN poisoning and death, hence farmers are advised to take precautionary measures

Small ruminants overfed with excessive grain feed are at the edge of procuring Enterotoxaemia, hence precautionary measures should be taken

The drainage system in cattle shed must be open and blockage free with access to easy cleaning to prevent fly breeding.

Rabbitaries with asbestos/metal roofs will experience more heat during summer, hence covering the roof with coconut leaves or gunny bags and splashing water over them will reduce the inner micro climate of rabbit shed.

To prevent E.coli infection in nursery piggery shed the floor must be washed with luke warm saline / good irritant free disinfectant atleast weekly once.

Native poultry reared under integrated method incase infested with lice, must be given medicated bath.

A sponge dipped in one ml of butox mixed in one litre of water could be rubbed all over the body on a bright sunny day. Care must be exercised to avoid eyes ear lobe and mouth.

#### Agricultural advisory

##### Rice:

Due to prevailing weather condition, thrips, leaf folder and stem borer incidence was observed in rice field. The symptom of thrips damage leaf shows discoloration and rolling, yellow or silvery streaks on the leaves of young seedlings and leaf tips wither off. For thrips management, spray azadirachtin 0.15% @600-1000 ml/acre or thiamethoxam 25 WG @40g/acre. To control leaf folder and stem borer incidence, apply fipronil 80% WG 20-25 g/acre.

Due to prevailing weather condition chances of thrips infestation in paddy field. To control spray thiamethoxam 25% WG 100 g/ha or dimethoate 1.5ml/l. 2. Due to prevailing weather condition brown plant leafhopper infestation is found in paddy crop. Symptoms Nymphs and adults congregate at the base of the plant above the water level. Affected plant dries up and gives a scorched appearance called "hopper burn". Circular patches of drying and lodging of matured plant. To control spray carbosulfan 400 ml/ac + imidaclopride 40ml/ac or pymetrozine 120 g/ac with wetting agent.

The forecasted weather may cause leaf folder infestation in rice crop. The farmers are advised to monitor the field, if symptoms are observed it's advised to spray Chlorantraniliprole 18.5% 150 ml/ha.

##### Sugarcane:

Mealy bug and pokkahboeng infection identified in sugarcane crop. Mealy bug affect growth of plants and pokkahboeng cause death of young spindles of sugarcane crop. To control spray imidacloprid 17.8 SL 0.6 ml/l or carbendazim 1.0 g/l. 2. Due to prevailing weather condition changes of sugarcane early shoot borer infection. To control spray chlorantraniliprole 18.5 SC (0.5 ml/l) or fipronil 5 % SC (2.0 ml/l).

##### Coconut:

The coconut tree basins may be sown with sunhemp in the onset of monsoon and incorporated at flowering stage.

Installation of yellow sticky traps on the palm trunk to trap the adult whiteflies. 2. Encourage buildup of parasitoids (*Encarsia* sp.) and reintroduce parasitized pupae of emerging zones of whitefly outbreak. 3. In severe case, spray neem oil 10 ml/lit of water or spray azadirachtin 2.0 ml/lit of water with 1.0 ml of sticking agent.

Mango:

The mango crop harvesting is in progress. The fruit may be harvested with 1cm stalk to avoid flow of latex. The fruits may be treated with 2ml /lit Ethrel along with few sodium hydroxide pellets for uniform ripening and color development.

Banana:

High wind speed (>10 kmph) is expected on forthcoming days, so prop up 5 month old banana trees.

## Coimbatore

### Agro Advisory

Crop	Stage	Advisory
General		Moderate rainfall is expected along with heavy wind speeds of 10 – 26 kmph during this week in Western zone districts. Moderate to heavy rain may occur in the areas near western Ghat. Irrigation may be postponed based on soil moisture. If necessary, Spray the chemicals during non rainy and low wind speed hours.
Rice	Transplanting	Moderate rainfall is expected. Ensure adequate drainage facility in recently transplanted rice.
Sorghum	Vegetative	Utilizing received rainfall apply nitrogen fertilizers to the rain fed sorghum crop.
Maize	Sowing	Utilizing the rainfall, irrigated maize sowing may be continued with imidacloprid 70 WS seed treatment @ 10g/ Kg of seeds.
Groundnut	Vegetative	Prevailing weather is conducive for the cercospora leaf spot in groundnut monitor the disease initiation and if already crop is infected spray mangozeb @ 2.5 g per litre of water.
Sugarcane	Vegetative	Considering the high wind speed with light rainfall provide propping to the sugarcane by tying opposite row to prevent from lodging.
Banana		Considering the high wind speed @ 10-26 kmph, provide propping to the banana of more than five months old to prevent from lodging.
Grapes		June is the best time for pruning in monsoon grape crop. Weak and immature branches should be pruned without damaging in vines.
Coconut		Since southwest monsoon has started, dig the pits for planting tree crops.
Animal Husbandry		Due to high wind speed, feed material of poultries may drift. Hanging of gunny bags along the borders is advised to reduce the wind speed. Heavy wind leads to frequent desiccation to poultries especially broiler birds. To avoid this good quality sufficient quantity of water should be given to sustain the body weight. Provide adequate cool drinking water to all the animals to prevent thirst for water due to high wind speed.

SMS advisory:

Hanging of gunny bags along the borders is advised to prevent the drift of feed material due to heavy wind.

## Erode

### Agro Advisory

Crop	Stage	Advisory
General		Moderate rainfall is expected along with heavy wind speeds of 10 – 26 kmph during this week in Western zone districts. Moderate to heavy rain may occur in the areas near western Ghat. Irrigation may be postponed based on soil moisture. If necessary, Spray the chemicals during non rainy and low wind speed hours.
Rice	Transplanting	Moderate rainfall is expected. Ensure adequate drainage facility in recently transplanted rice.
Sorghum	Vegetative	Utilizing received rainfall apply nitrogen fertilizers to the rain fed sorghum crop.
Maize	Sowing	Utilizing the rainfall, irrigated maize sowing may be continued with imidacloprid 70 WS seed treatment @ 10g/ Kg of seeds.
Groundnut	Vegetative	Prevailing weather is conducive for the cercospora leaf spot in groundnut monitor the disease initiation and if already crop is infected spray mangozeb @ 2.5 g per litre of water.
Sugarcane	Vegetative	Considering the high wind speed with light rainfall provide propping to the sugarcane by tying opposite row to prevent from lodging.
Banana		Considering the high wind speed @ 10-26 kmph, provide propping to the banana of more than five months old to prevent from lodging.
Grapes		June is the best time for pruning in monsoon grape crop. Weak and immature branches should be pruned without damaging in vines.
Coconut		Since southwest monsoon has started, dig the pits for planting tree crops.
Animal Husbandry		Due to high wind speed, feed material of poultries may drift. Hanging of gunny bags along the borders is advised to reduce the wind speed. Heavy wind leads to frequent desiccation to poultries especially broiler birds. To avoid this good quality sufficient quantity of water should be given to sustain the body weight. Provide adequate cool drinking water to all the animals to prevent thirst for water due to high wind speed.

### SMS advisory:

Hanging of gunny bags along the borders is advised to prevent the drift of feed material due to heavy wind.

## Tiruppur

### Agro Advisory

Crop	Stage	Advisory
General		Moderate rainfall is expected along with heavy wind speeds of 10 – 26 kmph during this week in Western zone districts. Moderate to heavy rain may occur in the areas near western Ghat. Irrigation may be postponed based on soil moisture.

		If necessary, Spray the chemicals during non rainy and low wind speed hours.
Sorghum	Vegetative	Utilizing received rainfall apply nitrogen fertilizers to the rain fed sorghum crop.
Maize	Sowing	Utilizing the rainfall, irrigated maize sowing may be continued with imidacloprid 70 WS seed treatment @ 10g/ Kg of seeds.
Sugarcane	Vegetative	Considering the high wind speed with light rainfall provide propping to the sugarcane by tying opposite row to prevent from lodging.
Coconut		Since southwest monsoon has started, dig the pits for planting tree crops.
Animal Husbandry		Due to high wind speed, feed material of poultries may drift. Hanging of gunny bags along the borders is advised to reduce the wind speed. Heavy wind leads to frequent desiccation to poultries especially broiler birds. To avoid this good quality sufficient quantity of water should be given to sustain the body weight. Provide adequate cool drinking water to all the animals to prevent thirst for water due to high wind speed.

SMS advisory:

Hanging of gunny bags along the borders is advised to prevent the drift of feed material due to heavy wind.

## Nilgiris

Heavy rainfall is expected for first two day, moderate rainfall is expected for third & fourth day, very light rainfall is expected for fifth day, i) Provide drainage facility. ii) Postpone the intercultural / plant protection activities like fertilizer and pesticide application, till the rain stops.

Hence vegetable farmers are requested to drain the excess water in vegetable field by making proper drainage facility.

Horticulture (Stage)	Horticulture Specific Advisory
BANANA (Transplanting)	i) Provide support to 5 months old trees using wooden poles. ii) Provide drainage facility and avoid fertilizer and pesticide application. iii) Removal and destruction of decaying and rotten leaves
Live Stock	Live Stock Specific Advisory
BUFFALO (Transplanting)	i) Protect your animals from lightning and thunderstorm. ii) Do not allow the animals to graze outside. iii) Don't tie the animals to the electric poles and under trees. iv) In consultation with the local veterinarian, vaccinate your animals against seasonal diseases.

## Dindigul

SMS Advisory	Chances of Moderate rain during 26, 27, 28 Jun & light rain on 29 Jun. Maximum temperature would be in the range of 33°C to 37°C and the minimum temperature would be between 23°C - 27°C. Cloudy sky will appear for the next five days. Wind is expected with the speed of 8-14 Kmph from, West & Northwest directions.
--------------	---

#### General Advisory:

Extended range Forecast for next week (28th June to 04th July 2024):

#### Rainfall:

As per extended range predictions, there is possibility of generally normal to slightly above normal rainfall likely over the district during 28th Jun to 04th July 2024.

#### Maximum Temperature:

Maximum temperatures are likely to be near normal to slightly above normal and are likely to be in the range 26°C to 32°C over the plains of the district during next week. 28th Jun to 04th July 2024.

#### Minimum Temperature:

Minimum temperatures are likely to be near normal to slightly above normal and are likely to be in the range 20°C to 24°C over the district during next week 28th Jun to 04th July 2024.

Heavy rain is likely to occur at isolated places over the district on 26 & 27 June 2024. Farmers are advised to act swiftly to repair the water channels, farm ponds and other water bodies to harvest the rain water. During these days farmers are advised to avoid irrigation, intercultural operations and application of plant protection measures to the standing crops, provide adequate drainage facilities in the fields to avoid water stagnation due to heavy rainfall, do not allow the animals to grazing outside, standing near the trees or electric poles & provide safe shelter.

#### Agriculture:

As the temperature is expected to increase in the forthcoming days, sucking pest infestation may be prevalent in vegetables, pulses and groundnut crops. Hence, 5% Neem seed kernel extract may be sprayed to control the pest incidence.

#### Weather Based Agro-Advisories: (Bhendi, Moringa & Animal Husbandry)

##### Bhendi:

Prevailing weather condition is suitable for sowing Bhendi in raised beds for nursery seedlings.

Treat the seeds with *Trichoderma viride* @ 10g/kg and *Pseudomonas fluorescens* @ 10g/kg of seeds mixed with rice gruel and again with 400gm of *Azospirillum* using starch as adhesive.

Dry the seeds in the shade for 30 minutes.

Sow three seeds per hill at 30 cm apart and then thin to 2 plants per hill after 10 days.

##### Moringa:

The Budworm is anticipated to occur in Moringa. This Larva bores into flower buds and causes shedding. Collect and destroy the affected buds and flowers.

To control spray Neem oil @ 35ml + Sticky agent @ 10ml with 10litres of water.

##### Animal Husbandry:

Hemorrhagic Septicemia disease, which affects cattle, is most prevalent during the rainy season. Milch animals, especially buffaloes and crossbred cows, are more susceptible to this disease.

Infected animals develop severe fever, dysentery, and swelling in the lower mandible, head, neck, throat, and chest.

Germs of this disease survive longer in humid and waterlogged conditions.



As a precautionary measure to avoid this, it is necessary to consult a nearby veterinary doctor before the rainy season and vaccinate the cows.

## Madurai

SMS Advisory	Chances of light rain during 26, 27, 28 & 29 Jun. Maximum temperature would be in the range of 33°C to 37°C and the minimum temperature would be between 24°C - 27°C. Cloudy sky will appear for the next five days. Wind is expected with the speed of 8-12 Kmph from, West & Southwest directions.
--------------	--

General Advisory:

Extended range Forecast for next week (28th June to 04th July 2024):

Rainfall:

As per extended range predictions, there is possibility of generally normal to slightly above normal rainfall likely over the district during 28th Jun to 04th July 2024.

Maximum Temperature:

Maximum temperatures are likely to be near normal to slightly above normal and are likely to be in the range 26°C to 32°C over the plains of the district during next week. 28th Jun to 04th July 2024.

Minimum Temperature:

Minimum temperatures are likely to be near normal to slightly above normal and are likely to be in the range 20°C to 24°C over the district during next week 28th Jun to 04th July 2024.

Agriculture:

As the temperature is expected to increase in the forthcoming days, sucking pest infestation may be prevalent in vegetables, pulses and groundnut crops. Hence, 5% Neem seed kernel extract may be sprayed to control the pest incidence.

Weather Based Agro-Advisories: (Brinjal, Jasmine & Animal Husbandry)

Brinjal:

The little leaf disease infestation is slightly found in Brinjal. The symptoms are a reduction in the size of leaves, Shortened petioles, excessive growth of branches general stunting of plants, conversion of floral parts into leafy structures, and rare fruiting.

Remove the infected plants and destroy them.

To control, foliar spray 6ml of Imidachlopride with 10ml of Sticking agent per 10 litres of water.

Jasmine:

The incense of Collar and Root Rot disease is expected in Jasmine. Plants at all stages are infected by this disease.

The symptoms are, initially, the older leaves become yellow followed by younger leaves and finally, the plant will die. Black discolouration can be seen on the root part.

To control, remove and destroy the affected plant from the field. Soil drenching of Copper Oxchloride @ 2 ½ gm per litre of water per plant is recommended.

Animal Husbandry:

Hemorrhagic Septicemia disease, which affects cattle, is most prevalent during the rainy season. Milch animals, especially buffaloes and crossbred cows, are more susceptible to this disease.

Infected animals develop severe fever, dysentery, and swelling in the lower mandible, head, neck, throat, and chest.

Germs of this disease survive longer in humid and waterlogged conditions.

As a precautionary measure to avoid this, it is necessary to consult a nearby veterinary doctor before the rainy season and vaccinate the cows.

## Pudukottai

SMS Advisory	Chances of very light rain on 26 Jun. Maximum temperature would be in the range of 35°C to 36°C and the minimum temperature would be between 25°C - 26°C. Generally cloudy sky will appear for the next five days. Wind is expected with the speed of 8-19 Kmph from, Southwest direction.
--------------	--

General Advisory:

Extended range Forecast for next week (28th June to 04th July 2024):

Rainfall:

As per extended range predictions, there is possibility of generally normal to slightly above normal rainfall likely over the district during 28th Jun to 04th July 2024.

Maximum Temperature:

Maximum temperatures are likely to be near normal to slightly above normal and are likely to be in the range 36°C to 36°C over the plains of the district during next week. 28th Jun to 04th July 2024.

Minimum Temperature:

Minimum temperatures are likely to be near normal to slightly above normal and are likely to be in the range 24°C to 28°C over the district during next week 28th Jun to 04th July 2024.

Wind with the speed of 8 to 16 kmph is expected for the next five days. Hence farmers are advised to provide propping in sugarcane and to provide adequate support for crops like Banana, Papaya, Guava and Moringa, to prevent from lodging. For Gourds check the structures /pandhals for damages in the strings and poles and provide adequate support. Postpone the spraying activity.

Agriculture:

As the temperature is expected to increase in the forthcoming days, sucking pest infestation may be prevalent in vegetables, pulses and groundnut crops. Hence, 5% Neem seed kernel extract may be sprayed to control the pest incidence.

Weather Based Agro-Advisories: (Groundnut, Moringa & Animal Husbandry)

Groundnut:

The application of Gypsum is important for the Groundnut crop. Apply gypsum @ 400 kg/ha by the side of the plants on the 40th to 45th day of sowing for irrigated crops and on the 40th to 75th day of sowing for rain-fed crops.

Apply gypsum, hoe and incorporate in the soil and then earth up.

Gypsum is effective in calcium and Sulphur-deficient soils.

Moringa:

At this growth stage, weed management and aftercare are important in the Annual Moringa crop.

Up to 2 months after planting, it is necessary to follow weed management practices and clean the Moringa field without weeds.

Pinch the terminal bud on the central leader stem when it attains a height of 1 to 2 metres. This will promote the growth of many lateral branches leading to more flowering and fruits. Also, the harvesting will be made easy as the tender pods and leaves will be in comfortable reach.

Animal Husbandry:

Hemorrhagic Septicemia disease, which affects cattle, is most prevalent during the rainy season. Milch animals, especially buffaloes and crossbred cows, are more susceptible to this disease.

Infected animals develop severe fever, dysentery, and swelling in the lower mandible, head, neck, throat, and chest.

Germs of this disease survive longer in humid and waterlogged conditions.

As a precautionary measure to avoid this, it is necessary to consult a nearby veterinary doctor before the rainy season and vaccinate the cows.

## Ramanathapuram

SMS Advisory	For the next five days, Maximum temperature would be in the range of 36°C to 38°C and the minimum temperature would be between 25°C - 26°C. Partly cloudy sky will appear for the next five days. Wind is expected with the speed of 20-28 Kmph from, Southwest direction.
--------------	--

General Advisory:

Extended range Forecast for next week (28th June to 04th July 2024):

#### Rainfall:

As per extended range predictions, there is possibility of generally normal to slightly above normal rainfall likely over the district during 28th Jun to 04th July 2024.

#### Maximum Temperature:

Maximum temperatures are likely to be near normal to slightly above normal and are likely to be in the range 36°C to 36°C over the plains of the district during next week. 28th Jun to 04th July 2024.

#### Minimum Temperature:

Minimum temperatures are likely to be near normal to slightly above normal and are likely to be in the range 24°C to 28°C over the district during next week 28th Jun to 04th July 2024.

Wind with the speed of 20 to 28 kmph is expected for the next five days. Hence farmers are advised to provide propping in sugarcane and to provide adequate support for crops like Banana, Papaya, Guava and Moringa, to prevent from lodging. For Gourds check the structures /pandhals for damages in the strings and poles and provide adequate support. Postpone the spraying activity.

Since dry weather is forecasted for the next five days, based on the soil moisture condition of the field, farmers can provide irrigation to their crops

#### Agriculture:

As the temperature is expected to increase in the forthcoming days, sucking pest infestation may be prevalent in vegetables, pulses and groundnut crops. Hence, 5% Neem seed kernel extract may be sprayed to control the pest incidence.

#### Weather Based Agro-Advisories: (Chilly, Paddy & Animal Husbandry)

##### Chilly:

To control the flower, and fruit falling and to increase fruit set in chilly crop,

Spray NAA 10 ppm (10 mg/l of water) on 60 and 100 days after planting.

Also spray Triacntanol @ 1.25 ml/l on 20, 40, 60 and 80th day of planting.

##### Paddy:

The incense of Brown Spot disease expected in Paddy. The disease appears first as minute brown dots later becoming cylindrical or oval to circular on leaves. Spots coalesce to form large patches leading to the leaf drying up.

Infection also occurs on the panicle and neck with a brown color appearance.

To control spray Metominostrobin @ 500ml /acre.

##### Animal Husbandry:

Hemorrhagic Septicemia disease, which affects cattle, is most prevalent during the rainy season. Milch animals, especially buffaloes and crossbred cows, are more susceptible to this disease.

Infected animals develop severe fever, dysentery, and swelling in the lower mandible, head, neck, throat, and chest.

Germs of this disease survive longer in humid and waterlogged conditions.

As a precautionary measure to avoid this, it is necessary to consult a nearby veterinary doctor before the rainy season and vaccinate the cows.

## Sivagangai

SMS Advisory	Chances of very light rain on 26 & 28 Jun. Maximum temperature would be in the range of 33°C to 37°C and the minimum temperature would be between 24°C - 27°C. Cloudy sky will appear for the next five days. Wind is expected with the speed of 8-18 Kmph from, Southwest & West directions.
--------------	---

General Advisory:

Extended range Forecast for next week (28th June to 04th July 2024):

Rainfall:

As per extended range predictions, there is possibility of generally normal to slightly above normal rainfall likely over the district during 28th Jun to 04th July 2024.

Maximum Temperature:

Maximum temperatures are likely to be near normal to slightly above normal and are likely to be in the range 26°C to 32°C over the plains of the district during next week. 28th Jun to 04th July 2024.

Minimum Temperature:

Minimum temperatures are likely to be near normal to slightly above normal and are likely to be in the range 20°C to 24°C over the district during next week 28th Jun to 04th July 2024.

Wind with the speed of 8 to 18 kmph is expected for the next five days. Hence farmers are advised to provide propping in sugarcane and to provide adequate support for crops like Banana, Papaya, Guava and Moringa, to prevent from lodging. For Gourds check the structures /pandhals for damages in the strings and poles and provide adequate support. Postpone the spraying activity.

Agriculture:

As the temperature is expected to increase in the forthcoming days, sucking pest infestation may be prevalent in vegetables, pulses and groundnut crops. Hence, 5% Neem seed kernel extract may be sprayed to control the pest incidence.

Weather Based Agro-Advisories: (Coconut, Bhendi & Animal Husbandry)

Coconut:

Using the existing soil moisture condition due to the recent rainfall, the Coconut Farmers are advised to sow the seeds of green manure crop sun hemp around the coconut trees @50gms/tree and incorporate the same into the soil after 45 days.

Bhendi:

The incidence of mites is noticed in Bhendi. The symptoms are, leaves stippled with yellow, leaves may appear bronzed, and leaves are webbing covering.

To control prepare a paste of Ginger @ 250gm, Chilli @ 250gm, and Garlic @ 250gm and dilute the paste in 70 litres of water.

Take 100ml of Ginger, Chilly, and Garlic solution, add 250ml of well-fermented curd and 20ml of egg white with 10 litres of water and spray.

Animal Husbandry:

Hemorrhagic Septicemia disease, which affects cattle, is most prevalent during the rainy season. Milch animals, especially buffaloes and crossbred cows, are more susceptible to this disease.

Infected animals develop severe fever, dysentery, and swelling in the lower mandible, head, neck, throat, and chest.

Germs of this disease survive longer in humid and waterlogged conditions.

As a precautionary measure to avoid this, it is necessary to consult a nearby veterinary doctor before the rainy season and vaccinate the cows.

## Theni

SMS Advisory	Chances of Moderate rain during 26, 27, 28 Jun & light rain on 29 Jun. Maximum temperature would be in the range of 30°C to 33°C and the minimum temperature would be between 20°C - 23°C. Generally cloudy sky will appear for the next five days. Wind is expected with the speed of 10-14 Kmph from, West & Southwest directions.
--------------	--

General Advisory:

Extended range Forecast for next week (28th June to 04th July 2024):

Rainfall:

As per extended range predictions, there is possibility of generally normal to slightly above normal rainfall likely over the district during 28th Jun to 04th July 2024.

Maximum Temperature:

Maximum temperatures are likely to be near normal to slightly above normal and are likely to be in the range 26°C to 32°C over the plains of the district during next week. 28th Jun to 04th July 2024.

Minimum Temperature:

Minimum temperatures are likely to be near normal to slightly above normal and are likely to be in the range 20°C to 24°C over the district during next week 28th Jun to 04th July 2024.

Heavy rain is likely to occur at isolated places over the district on 26 & 27 June 2024. Farmers are advised to act swiftly to repair the water channels, farm ponds and other water bodies to harvest the rain water. During these days farmers are advised to avoid irrigation, intercultural operations and

application of plant protection measures to the standing crops, provide adequate drainage facilities in the fields to avoid water stagnation due to heavy rainfall, do not allow the animals to grazing outside, standing near the trees or electric poles & provide safe shelter.

#### Agriculture:

As the temperature is expected to increase in the forthcoming days, sucking pest infestation may be prevalent in vegetables, pulses and groundnut crops. Hence, 5% Neem seed kernel extract may be sprayed to control the pest incidence.

#### Weather Based Agro-Advisories: (Papaya, Sugarcane & Animal Husbandry)

##### Papaya:

The incidence of Whitefly is expected in Papaya. The symptom of damage appears under the surface of the leaves, the nymphs and adults suck the sap from the leaves and hence the leaves become yellow.

To control this, with respect to the height of the plant, place Yellow Sticky traps @ 8 Nos per Acre.

Prepare a (3G) solution with the combination of Green Chilly @ 250gm + Garlic @ 250gm + Ginger @ 100gm, grind well and mixed it with 3 litres of water, keep the solution overnight, spray 300ml of the extracted solution + Pseudomonas @ 40gm + Eggwhite @ 20ml per 10 litres of water.

##### Sugarcane:

Symptoms of Phosphorus deficiency are observed in the Sugarcane fields. The Colour of the leaves is greenish-blue, reduction in the length of sugarcane stalks, diameters of which taper rapidly at growing points.

Poor or no-tillers, decreased shoot/root ratio with restricted root development are the symptoms of damage.

To rectify this, apply a large amount of rock phosphate up to 1 Tonne/ha. Foliar spray of DAP @ 20gm/litre, twice in fortnight intervals.

##### Animal Husbandry:

Hemorrhagic Septicemia disease, which affects cattle, is most prevalent during the rainy season. Milch animals, especially buffaloes and crossbred cows, are more susceptible to this disease.

Infected animals develop severe fever, dysentery, and swelling in the lower mandible, head, neck, throat, and chest.

Germs of this disease survive longer in humid and waterlogged conditions.

As a precautionary measure to avoid this, it is necessary to consult a nearby veterinary doctor before the rainy season and vaccinate the cows.

## Virudhunagar

Crop	Stage	Agromet Advisory
Irrigated crops	Water management	Very light rainfall is predicted for next three days. Irrigate the crop and spray based on local weather condition.
Paddy	Milking stage	Maintain the water level. Apply the fertilizer. Present weather (wind) induced Bacterial Blight incidence. To control spray 3% neem oil or 5% neem extract. Use optimum dose of fertilizers. Avoid flooded conditions. Present weather induced Whorl maggot. To control Cartap Hydrochloride 4% G 7.5-10 kg/ac (or) Chlorpyrifos 20% EC 500 ml/ac.
Banana	All the stage	Farmers are advised to practice propping and earthing up to avoid damaged due to wind speed.
Coconut	Physiological Maturity	Rhinoceros beetle pest population is noticed coinciding with the onset of monsoon. To control set up Rhino lure pheromone trap @ 5 traps/ha to trap and kill the beetles. Also, Soak castor cake at 1 kg in 5 liter of water in small mud pots and keep them in the coconut gardens to attract and kill the adults.
Drumstick		Prevailing weather conditions is conducive to Leaf caterpillar infestation. To control, plough around trees to expose and kill pupae. Collect and destroy damaged buds along with caterpillar. Set up light trap @ 1/ha. Spray insecticides like carbaryl 50 WP@ 1gm/lit or malathion 50 EC 2 ml/lit of water.
Land preparation		In order to improve the soil quality recycles the residues of harvested crops of maize, sorghum and pulses. Use rotovator or rotoslasher for cutting the residues into small pieces and incorporate them into the soil.

SMS: Rain: 26-28.06-2,2&1 mm. Paddy- Bacterial Blight- spray 3% neem oil. Whorl maggot-spray Cartap Hydrochloride 4% G 7.5-10 kg/ac. Coconut- Rhinoceros beetle- Rhino lure pheromone trap @ 5 traps/ha.

## Tirunelveli

Crop	Stage	Agromet Advisory
Irrigated crops	Water management	Light to moderate rainfall is predicted for next four days. Postpone the irrigation.
Paddy	Vegetative to Milking stage	Maintain the water level. Request to avoid apply the fertilizer. Bund rectification to be done to avoid damage.
Vegetables	Rainfall	Harvest the products as earlier to avoid the rainfall damage
Banana	All the stage	Farmers are advised to practice propping and earthing up to avoid damaged due to wind speed.
Coconut	Physiological Maturity	Rhinoceros beetle pest population is noticed coinciding with the onset of monsoon. To control set up Rhino lure pheromone trap @ 5 traps/ha to trap and kill the beetles. Also, Soak castor cake at 1 kg in 5 liter of water in small mud pots and keep them in the coconut gardens to attract and kill the adults.
Drumstick	(soft dough)	Prevailing weather conditions is conducive to Leaf caterpillar infestation. To control, plough around trees to expose and kill pupae. Collect and destroy damaged buds along with caterpillar. Set up light trap @ 1/ha. Spray insecticides like carbaryl 50 WP@ 1gm/lit or malathion 50 EC 2 ml/lit of water.
Land		In order to improve the soil quality recycles the residues of harvested crops of



preparation		maize, sorghum and pulses. Use rotovator or rotoslasher for cutting the residues into small pieces and incorporate them into the soil.
-------------	--	--

SMS: Rain: 26-30.06- 24,27,6,5&2 mm. Postpone the irrigation. Paddy- Bund rectification to be done.  
Banana–wind& rainfall-practice propping.

Tamil Nadu		
Moderate Westerlies/Southwesterlies prevail over the region in the lower tropospheric levels.		
Weather forecast	Next five days	Light to moderate rain at a few places with thunderstorm and lightning at one or two places is likely to occur over Tamilnadu on Day 1 (26.06.24). Heavy rain is likely to occur at isolated places over Kanyakumari district; Ghat areas of Tiruppur, Dindigul, Theni, Tenkasi and Tirunelveli districts on Day 1 (26.06.24). Light to moderate rain at a few places with thunderstorm and lightning at one or two places is likely to occur over Tamilnadu on Day 2 (27.06.24). Heavy rain is likely to occur at isolated places over Kanyakumari district; Ghat areas of Tiruppur, Dindigul, Theni, Tenkasi and Tirunelveli districts on Day 2 (27.06.24). Light to moderate rain at a few places with thunderstorm and lightning at one or two places is likely to occur over Tamilnadu on Day 3 (28.06.24). Light to moderate rain is likely to occur at one or two places over Tamilnadu on Day 4 (29.06.24) & Day 5 (30.06.24).

## Thoothukudi

Crop	Stage	Agromet Advisory
Irrigated crops	Water management	No rainfall is predicted for next five days. Farmers are requested irrigate the crop.
Paddy	Vegetative to Milking stage	Maintain the water level. Apply the fertilizer. Present weather (wind) induced Bacterial Blight incidence. To control spray 3% neem oil or 5% neem extract. Use optimum dose of fertilizers. Avoid flooded conditions. Present weather induced Whorl maggot. To control Cartap Hydrochloride 4% G 7.5-10 kg/ac (or) Chlorpyrifos 20% EC 500 ml/ac.
Banana	All the stage	Farmers are advised to practice propping and earthing up to avoid damaged due to wind speed.
Coconut	Physiological Maturity	Rhinoceros beetle pest population is noticed coinciding with the onset of monsoon. To control set up Rhino lure pheromone trap @ 5 traps/ha to trap and kill the beetles. Also, Soak castor cake at 1 kg in 5 liter of water in small mud pots and keep them in the coconut gardens to attract and kill the adults.
Drumstick		Prevailing weather conditions is conducive to Leaf caterpillar infestation. To control, plough around trees to expose and kill pupae. Collect and destroy damaged buds along with caterpillar. Set up light trap @ 1/ha. Spray insecticides like carbaryl 50 WP@ 1gm/lit or malathion 50 EC 2 ml/lit of water.
Land preparation		In order to improve the soil quality recycles the residues of harvested crops of maize, sorghum and pulses. Use rotovator or rotoslasher for cutting the residues into small pieces and incorporate them into the soil.

SMS: Rain: Nil. Paddy- Bacterial Blight- spray 3% neem oil. Whorl maggot-spray Cartap Hydrochloride 4% G 7.5-10 kg/ac. Coconut- Rhinoceros beetle- Rhino lure pheromone trap @ 5 traps/ha.

Tamil Nadu		
Moderate Westerlies/Southwesterlies prevail over the region in the lower tropospheric levels.		
Weather forecast	Next five days	<p>Light to moderate rain at a few places with thunderstorm and lightning at one or two places is likely to occur over Tamilnadu on Day 1 (26.06.24).</p> <p>Heavy rain is likely to occur at isolated places over Kanyakumari district; Ghat areas of Tiruppur, Dindigul, Theni, Tenkasi and Tirunelveli districts on Day 1 (26.06.24).</p> <p>Light to moderate rain at a few places with thunderstorm and lightning at one or two places is likely to occur over Tamilnadu on Day 2 (27.06.24).</p> <p>Heavy rain is likely to occur at isolated places over Kanyakumari district; Ghat areas of Tiruppur, Dindigul, Theni, Tenkasi and Tirunelveli districts on Day 2 (27.06.24).</p> <p>Light to moderate rain at a few places with thunderstorm and lightning at one or two places is likely to occur over Tamilnadu on Day 3 (28.06.24).</p> <p>Light to moderate rain is likely to occur at one or two places over Tamilnadu on Day 4 (29.06.24) &amp; Day 5 (30.06.24).</p>

## Kanyakumari

### AGRO ADVISORIES

S. N.	CROP	STAGES	ADVISORIES
1.	Banana	Shooting stage.	As 14 - 22 km/hr wind speed is anticipated, it is advised to provide mechanical support to banana crop to avoid lodging.
2.	Agricultural and Horticultural crops	All stages	Spraying of insecticides, weedicides and application of fertilizer should be postponed due to rain.
3.	Rubber	Tapping Stage	Fix a polythene rain guard to the trunk of the tree above the tapping panel so that tapping can be done during rainy season also.
4.	Horticultural crops.	All stages	As rainy weather is expected in the coming days strengthening the basins for coconut, nutmeg, pepper and cinnamon trees may be taken up for better harvesting of rains.
5.	Pepper	All stages	The runner shoots may be protected from spreading on the ground by coiling it on supports.
6.	Jack	Harvested stage	Harvested fruits should be stored in dry places.

#### SMS Advisory

Avoid application of fertilizer, insecticide and weedicide due to heavy rain and high wind speed.

## Salem

### Weather Advisory Bulletin for livestock, poultry and agro advisory

Livestock, Poultry & Crop	Stage	Weather advisory
Poultry	General	<p>In the recent days, there has been a rainy day followed by shine days in a week, this prevailing temperature and relative humidity is found to be an ideal condition for fly breeding.</p> <p>This has led to a high fly population in poultry farms. A simple technique is commonly practised to monitor fly population is spot card, which helps to take decision on fly control measures at an appropriate time.</p> <p>A white paper of size 5 x 3 inch mounted on a cardboard with pin and keep 5 – 10 spot cards per shed for 24 hour. After 24 hour, cards are collected and fly specks spots (faecal and vomit drops) can be counted to arrive approximate number of flies.</p> <p>If the fly spots are above 100, necessary control measures have to be taken.</p> <p>To control fly menace, the farm premises should be maintained hygienically through replacement of faulty nipples, proper disposal of dead birds and broken eggs.</p> <p>If fly intensity is high, the birds should be fed with Insect Growth Regulators mixed feed.</p>
Poultry	General	<p>As the wind speed will be high, the poultry farmers having raised platform sheds should be careful in avoiding feed wastage.</p> <p>High wind speed is expected during next two ensuing months.</p> <p>Addition of vegetable oil in small quantities and using of side hangings will prevent wastage of feed particularly loss of valuable supplements like vitamins.</p>
Agro advisory from Krishi Vigyan Kendra		
Arecanut	Vegetative stage	<p>Arecanut farmers are requested to apply 10 – 15 kg well decomposed farmyard manure, 217 gram of urea, 250 gram of super phosphate and 234 gram of muriate of potash / tree / year. Split the above doses in to two splits equally and apply one part during January and February and another part during June and July month of every year in 2 – 3 feet away from the basin of the arecanut tree. To reduce the dose up to 50 % and then apply the same for trees having age of less than 5 years.</p>
Castor	Sowing season	<p>Apply castor micronutrient mixture @ 5 kg / acre for variety, 6 kg / acre for hybrid under irrigated condition. For rainfed crop apply 3.5 kg castor micronutrient mixture for variety, 4 kg / acre for hybrid during sowing of castor</p>
Banana	General	<p>KVK, Namakkal entered in to MoA with National Research Centre for Banana, Trichy and got TOT for Banana Shakti micronutrient formulation. Since, April 2022 KVK, Namakkal has started producing and selling Banana Shakti. Hence, banana growers are advised to purchase Banana Shakti from KVK, Namakkal on cost basis @ Rs. 250 / kg.</p>

## Namakkal

### Weather Advisory Bulletin for livestock, poultry and agriculture

Livestock, Poultry & Crop	Stage	Weather advisory
Poultry	General	<p>In the recent days, there has been a rainy day followed by shine days in a week, this prevailing temperature and relative humidity is found to be an ideal condition for fly breeding.</p> <p>This has led to a high fly population in poultry farms. A simple technique is commonly practised to monitor fly population is spot card, which helps to take decision on fly control measures at an appropriate time.</p> <p>A white paper of size 5 x 3 inch mounted on a cardboard with pin and keep 5 – 10 spot cards per shed for 24 hour. After 24 hour, cards are collected and fly specks spots (faecal and vomit drops) can be counted to arrive approximate number of flies.</p> <p>If the fly spots are above 100, necessary control measures have to be taken.</p> <p>To control fly menace, the farm premises should be maintained hygienically through replacement of faulty nipples, proper disposal of dead birds and broken eggs.</p> <p>If fly intensity is high, the birds should be fed with Insect Growth Regulators mixed feed.</p>
Poultry	General	<p>As the wind speed will be high, the poultry farmers having raised platform sheds should be careful in avoiding feed wastage.</p> <p>High wind speed is expected during next two ensuing months.</p> <p>Addition of vegetable oil in small quantities and using of side hangings will prevent wastage of feed particularly loss of valuable supplements like vitamins.</p>
Agro advisory from Krishi Vigyan Kendra, Namakkal :		
Arecanut	Vegetative stage	<p>Arecanut farmers are requested to apply 10 – 15 kg well decomposed farmyard manure, 217 gram of urea, 250 gram of super phosphate and 234 gram of muriate of potash / tree / year. Split the above doses in to two splits equally and apply one part during January and February and another part during June and July month of every year in 2 – 3 feet away from the basin of the arecanut tree. To reduce the dose up to 50 % and then apply the same for trees having age of less than 5 years.</p>
Castor	Sowing season	<p>Apply castor micronutrient mixture @ 5 kg / acre for variety, 6 kg / acre for hybrid under irrigated condition. For rainfed crop apply 3.5 kg castor micronutrient mixture for variety, 4 kg / acre for hybrid during sowing of castor</p>
Banana	General	<p>KVK, Namakkal entered in to MoA with National Research Centre for Banana, Trichy and got TOT for Banana Shakti micronutrient formulation. Since, April 2022 KVK, Namakkal has started producing and selling Banana Shakti. Hence, banana growers are advised to purchase Banana Shakti from KVK, Namakkal on cost basis @ Rs. 250 / kg.</p>

## Dharmapuri

### Weather Advisory Bulletin for livestock, poultry and agriculture

Livestock, Poultry & Crop	Stage	Weather advisory
Poultry	General	<p>In the recent days, there has been a rainy day followed by shine days in a week, this prevailing temperature and relative humidity is found to be an ideal condition for fly breeding.</p> <p>This has led to a high fly population in poultry farms. A simple technique is commonly practised to monitor fly population is spot card, which helps to take decision on fly control measures at an appropriate time.</p> <p>A white paper of size 5 x 3 inch mounted on a cardboard with pin and keep 5 – 10 spot cards per shed for 24 hour. After 24 hour, cards are collected and fly specks spots (faecal and vomit drops) can be counted to arrive approximate number of flies.</p> <p>If the fly spots are above 100, necessary control measures have to be taken.</p> <p>To control fly menace, the farm premises should be maintained hygienically through replacement of faulty nipples, proper disposal of dead birds and broken eggs.</p> <p>If fly intensity is high, the birds should be fed with Insect Growth Regulators mixed feed.</p>
Poultry	General	<p>As the wind speed will be high, the poultry farmers having raised platform sheds should be careful in avoiding feed wastage.</p> <p>High wind speed is expected during next two ensuing months.</p> <p>Addition of vegetable oil in small quantities and using of side hangings will prevent wastage of feed particularly loss of valuable supplements like vitamins.</p>
Agro advisory from Krishi Vigyan Kendra		
Arecanut	Vegetative stage	<p>Arecanut farmers are requested to apply 10 – 15 kg well decomposed farmyard manure, 217 gram of urea, 250 gram of super phosphate and 234 gram of muriate of potash / tree / year. Split the above doses in to two splits equally and apply one part during January and February and another part during June and July month of every year in 2 – 3 feet away from the basin of the arecanut tree. To reduce the dose up to 50 % and then apply the same for trees having age of less than 5 years.</p>
Castor	Sowing season	<p>Apply castor micronutrient mixture @ 5 kg / acre for variety, 6 kg / acre for hybrid under irrigated condition. For rainfed crop apply 3.5 kg castor micronutrient mixture for variety, 4 kg / acre for hybrid during sowing of castor</p>
Banana	General	<p>KVK, Namakkal entered in to MoA with National Research Centre for Banana, Trichy and got TOT for Banana Shakti micronutrient formulation. Since, April 2022 KVK, Namakkal has started producing and selling Banana Shakti. Hence, banana growers are advised to purchase Banana Shakti from KVK, Namakkal on cost basis @ Rs. 250 / kg.</p>

## Krishnagiri

### Weather Advisory Bulletin for livestock, poultry and agriculture

Livestock, Poultry & Crop	Stage	Weather advisory
Poultry	General	<p>In the recent days, there has been a rainy day followed by shine days in a week, this prevailing temperature and relative humidity is found to be an ideal condition for fly breeding.</p> <p>This has led to a high fly population in poultry farms. A simple technique is commonly practised to monitor fly population is spot card, which helps to take decision on fly control measures at an appropriate time.</p> <p>A white paper of size 5 x 3 inch mounted on a cardboard with pin and keep 5 – 10 spot cards per shed for 24 hour. After 24 hour, cards are collected and fly specks spots (faecal and vomit drops) can be counted to arrive approximate number of flies.</p> <p>If the fly spots are above 100, necessary control measures have to be taken.</p> <p>To control fly menace, the farm premises should be maintained hygienically through replacement of faulty nipples, proper disposal of dead birds and broken eggs.</p> <p>If fly intensity is high, the birds should be fed with Insect Growth Regulators mixed feed.</p>
Poultry	General	<p>As the wind speed will be high, the poultry farmers having raised platform sheds should be careful in avoiding feed wastage.</p> <p>High wind speed is expected during next two ensuing months.</p> <p>Addition of vegetable oil in small quantities and using of side hangings will prevent wastage of feed particularly loss of valuable supplements like vitamins.</p>
Agro advisory from Krishi Vigyan Kendra		
Arecanut	Vegetative stage	<p>Arecanut farmers are requested to apply 10 – 15 kg well decomposed farmyard manure, 217 gram of urea, 250 gram of super phosphate and 234 gram of muriate of potash / tree / year. Split the above doses in to two splits equally and apply one part during January and February and another part during June and July month of every year in 2 – 3 feet away from the basin of the arecanut tree. To reduce the dose up to 50 % and then apply the same for trees having age of less than 5 years.</p>
Castor	Sowing season	<p>Apply castor micronutrient mixture @ 5 kg / acre for variety, 6 kg / acre for hybrid under irrigated condition. For rainfed crop apply 3.5 kg castor micronutrient mixture for variety, 4 kg / acre for hybrid during sowing of castor</p>
Banana	General	<p>KVK, Namakkal entered in to MoA with National Research Centre for Banana, Trichy and got TOT for Banana Shakti micronutrient formulation. Since, April 2022 KVK, Namakkal has started producing and selling Banana Shakti. Hence, banana growers are advised to purchase Banana Shakti from KVK, Namakkal on cost basis @ Rs. 250 / kg.</p>

## Karaikal

### Agro Advisory

Crop/livestock	Stage/Particulars	Agro Advisory
Cotton	Flowering to picking stage	To control root rot in cotton, sprinkle <i>Bacillus subtilis</i> @ 2.5 kg/ha and <i>Trichoderma viridi</i> @ 2.5 kg/ha mixed with 250 kg FYM and spread evenly in the cotton field.
		To rectify the micro nutrient deficiency in cotton, spray micro nutrient mixture cotton plus @ 6.25 kg/ha.
		Nipping may be done at 15th node for variety and 20th node for hybrid cotton to induce sympodial branches development.
Brinjal	Bearing stage	To manage Brinjal shoot borer, spray Emamectin Benzoate 4% SG @ 0.4g/l.
Gourds	Bearing stage	Spray ethrel @ 100 ppm (1 ml/10 litres of water) in snake gourd and bitter gourd and @ 250 ppm (2.5 ml/10 litres of water) in ribbed gourd, four times commencing from 15th day after sowing at weekly intervals to increase female flowers.
Coconut	Bearing stage	Root feeding of coconut tonic (200 ml / tree) in 3 months interval to avoid button shedding in coconut.

SMS: Light rain is expected from 26th June to 28th June. Hence, postpone irrigation to crops.

## Puducherry

### Agro Advisory

Crop	Stage/ Particulars	Agro Advisory
Rice	Tillering stage	To manage Bacterial leaf blight in paddy, spray fresh cow-dung extract 20% twice (starting from initial appearance of the disease and another at fortnightly interval) or spray Copper hydroxide 77 WP @ 2.5 g/l.
		To manage sheath rot in rice apply Hexaconazole 5% EC @ 2 ml/l or neem seed kernel extract 5%.
Black gram	Yellow mosaic virus	Installation of yellow sticky traps 12 nos/ha Rogue out the infected plants up to 45 days Foliar spray of notchi leaf extract 10% at 30 DAS or neem formulation 3 ml/lit Spray methyl demeton 25 EC 500 ml/ha or dimethoate 30 EC 500 ml/ha.
Sesame	Flowering to pod formation stage	In Sesame, to manage capsule borer spray neem seed kernel extract 5% or neem oil 3%.
		In Sesame, to manage Jassids, apply Acetamiprid 20 SP @ 0.3g/l.

Cassava	Vegetative stage	To manage red mite in Cassava, apply Pongamia oil 1 ml/l or spray Propargite 1.5 ml and Sulphur 2.5 g/ l.
Sugarcane	Vegetative stage	To control shoot borer in sugarcane, soil application of Cartaphydrochloride 4G 10kg/hectare may be done.
Brinjal	Flowering to Bearing stage	To manage Brinjal shoot borer, spray Emamectin Benzoate 4% SG @ 0.4g/l.
Gourds	Flowering stage	Spray ethrel @ 100 ppm (1 ml/10 litres of water) in snake gourd and bitter gourd and @ 250 ppm (2.5 ml/10 litres of water) in ribbed gourd, four times commencing from 15 <sup>th</sup> day after sowing at weekly intervals to increase female flowers.
Coconut	Bearing stage	To control spiralling whitefly in coconut, spray water forcibly and set up yellow sticky trap @ 8 numbers /ac. In severe cases, spray neem oil 0.5 %+ tween 80 (0.005%).
		Root feeding of coconut tonic (200 ml / tree) in 3 months interval to avoid button shedding in coconut.

SMS: Light rain is expected for next few days. Hence, postpone irrigation to crops.

=====